

SOLUTIONS FOR LIFE



Stealth Products

CUSHIONS



cushions.stealthproducts.com
+1 (800) 965-9229

CUSHION CATEGORIES



Skin Protection and Positioning Series (SPP) cushions offer a range of positioning options, convenient storage, and the Coolcore® Chemical-Free cover technology to effectively maintain comfort and proper contact skin temperature throughout the seasons. A selection of molded foams and a variety of inserts, relief cutouts, and toppers provide exceptional stability and comfort while keeping the pelvis in an optimal neutral position.



Positioning Series (P) cushions employ a high-density molded foam base with a closed cell posterior support section to keep the pelvis in a neutral position, provide optimal pelvic positioning and stability, and add exceptional comfort with a soft foam topper.



Skin Protection Series (SP) includes a general-use cushion with a foam or gel topper, specifically designed to protect the user from skin abrasions and discomfort during long-term use. It also utilizes a chemical-free Coolcore® cover, designed to effectively maintain proper and comfortable contact skin temperature throughout the seasons.



General Use Series (G) cushions are specifically designed for comfort, with basic mild contouring and cutouts for coccygeal and sacral relief. It is available from 16 in. to 22 in. (40.64cm to 55.88cm) in width and from 16 in. to 20 in. (40.64cm to 50.80cm) in depth.

ALSO AVAILABLE
CUSTOM.STEALTHPRODUCTS.COM



- ▶ **Multi-layered foam**
- ▶ **Deep Contour**
- ▶ **Coolcore® cushion cover has pockets on sides**

SPP



TRU-COMFORT® 2

WEIGHT CAPACITY

450 lbs.

OVERALL WEIGHT

4 lbs.

DIMENSIONS

from 14in (35.56cm) x 14in (35.56cm)
to 24in (60.96cm) x 24in (60.96cm)

SOF¹ available

PROFILE

4½ in (11.43cm)

MSRPS

\$400 - \$500

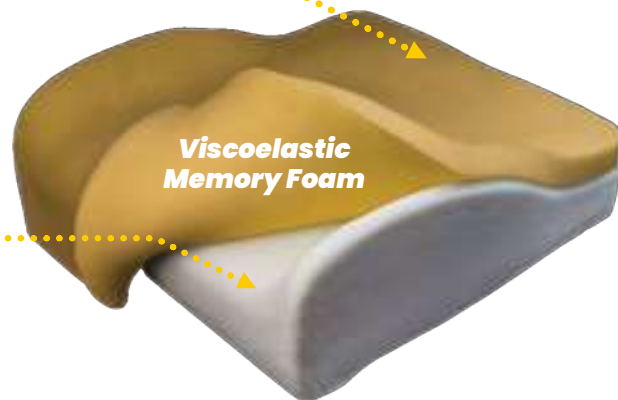
HCPCS

E2607 | E2608

Coccyx and Sacral Relief

Contoured to increase pelvic stability and surface contact

Deeply contoured, high density molded foam base



Viscoelastic Memory Foam

- Deep contoured base provides maximal pelvic stability, lower extremity support, and surface contact area
- Sub-trochanter support to increase lateral stability.
- Maintains alignment of the femurs medially and laterally
- Anti-thrust component provides a pre-ischial shelf to promote pelvic positioning. Abductor and adductor components create troughing to promote lower extremity positioning
- Top layer of viscoelastic memory foam provides optimal comfort and protection through immersive properties
- Coolcore is the standard cushion cover material that has proven temperature and moisture control. Additional zippered pockets on side of cushion

SIDE POCKETS



1. Special Order Form
 2. CoolCore® is standard on all cushions except the Simplicity G.
 3. Special order sizes available for all cushions except the Glacial SP. Contact sales for additional assistance
 4. Allowances listed are estimations for cushions billed in conjunction with Group 3 power chair bases using the KU modifier and may vary by state

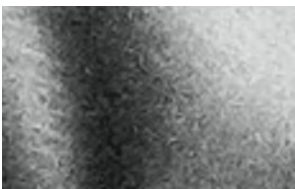
COVERS & FOAM MODS

COVER OPTIONS



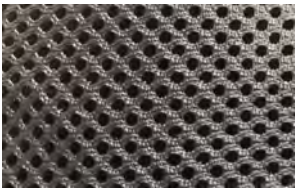
COOLCORE®

Coolcore is a research proven performance fabric technology that adapts to its environment and regulates temperature by managing heat and moisture. The proprietary construction helps manage and distribute moisture quickly throughout the fabric to enhance the evaporation and drying time.



STEALTH-TEK

Stealth-Tek is a cast coated fabric, which is nylon/polyester fabric coated with polyurethane through the cast coating method. These type of fabrics are waterproof with stretch capability and applications in medical and healthcare. Stealth-Tek is Fluid Proof PU Film laminated to 100% polyester knit T-jersey. It is used in a variety of applications. Waterproof, Breathable and Washable.



AIR MESH

Air Flow Mesh, better known as Air Mesh, is equipped with fine pores for superior air circulation, it can assist with positioning if the client has sliding issues with the current cushion cover material. This fabric is ideal for those in hot or humid environments.

FOAM OPTIONS

OPEN CELL



Medium

SUNMATE® FRG



Extra Extra Soft



Extra Soft



Soft



Medium Soft



Medium

Open Cell (OC3)

Open cell viscoelastic polyurethane foam is a soft foam. Open cell refers to the cell walls, or surfaces of the bubbles, which are broken so that air fills all of the spaces in the material.

SunMate® Fire Retardant Graphite (FRG) Cushions

FRG cushions provide the same high impact energy absorption and soft pressure properties as regular SunMate®, but with an added element of safety. SunMate® FRG contains a non-halogenated fire retardant that allows the cushion to pass more stringent fire tests. FRG also provides medical or government facilities, required to purchase equipment that meets strict fire codes, with a safe, high-quality cushion option.¹

The FRG is a patented all-natural fire retardant material (no additives) made of 33% to 36% plant-based ingredients.